

Intershield® One-2-One

Surface Tolerant Universal Primer for Onboard Maintenance (OBM)

Product Description

A surface tolerant universal pure epoxy primer for use as an anticorrosive touch up coating providing excellent corrosion protection.

Intershield® One-2-One is a crew friendly onboard maintenance two-pack universal primer, specifically engineered to a 1:1 mix ratio, offering simplified mixing and reduced wastage.

Features

Surface tolerant universal application for all vessel areas at OBM including ballast tanks.

Crew friendly small pack sizes available in "Equal" mix ratio

Excellent long term corrosion prevention and resistance to mechanical damage

Low temperature cure and year round workability

Benefits

Universal primer allows the replacement of several products with a single product that meets all the required OBM characteristics as well as meeting the service performance expectation of the vessel operator.

Simplified 1:1 mix ratio meaning reduced paint wastage from incorrect mixing and partially used tins. More efficient utilization of purchased coatings. More efficient inventory management and paint locker storage.

Designed to prevent the onset and progression of costly corrosion and to protect steel integrity whilst operating in harsh corrosive environments.

Simplified maintenance and repair procedures allowing greater flexibility in maintenance scheduling and optimizing of crew time and expenditure.

Product Data

Colors	IIA121-Aluminium Part A, IIA122-Red Part A, IIA125-Part B (Curing Agent)
VS%	65% ±2% (ISO 3233:1998) IIA121 67% ±2% (ISO 3233:1998) IIA122
Mix Ratio	1:1 Available in 2x 5lt packs
Typical film thickness	75 microns dry (115 microns wet)
Theoretical coverage	8.67m ² /litre at 75µm DFT 8.93m ² /litre at 75µm DFT
Application	Brush, Roller, Airless Spray
Touch Dry @ 25°C	3 Hours
Hard Dry @ 25°C	4 Hours
Thinner	Not required. Use International GTA220 only in exceptional circumstances

For each of our products the relevant Product Data Sheet, Material Safety Data Sheet and package labelling comprise an integral information system about the product in question. Copies of our Product Data Sheets and Material Safety Data Sheets are available on request or from our website.

Unless otherwise agreed in writing, all products supplied and technical advice or recommendations given are subject to the Conditions of Sale of our supplying company and the provisions of the relevant product data sheet.

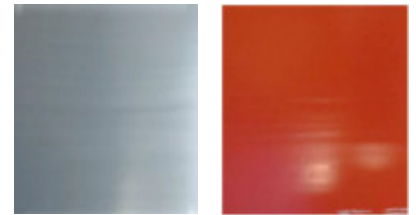
To find out more visit: www.international-marine.com

Certificates

Food Contact – Carriage of Grain (NOHH)
Food Contact – FDA compliant: Dry Foodstuffs
Potable water – BS6920*
Water Ballast Tank – PSPC WBT TAC*

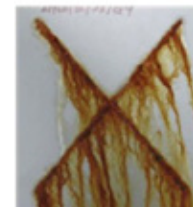
*Tested to this standard. Consult local IP representative for details

Product Performance



Excellent brush application properties delivering a smoother levelled finish.

Intershield One-2-One



Competitor



Intershield One-2-One in comparison to competitor product tested at 1000 hours hot salt spray

significant reduction



Reduced paint wastage from incorrect mixing and partially used tins.