

## Biocide-free fouling control coating

### Product Description

Intersleek®1000 is the first fouling control coating to use a patented technology that incorporates bio-renewable raw material to deliver enhanced vessel performance throughout the dry-docking cycle. Based on patented technology, Lanion enables hulls coated with Intersleek 1000 to maintain an ultra-smooth surface, reducing drag and lowering a vessel's fuel consumption and emissions.

Intersleek 1000 is a new product, tested on a full vessel with 5-year track record of proven fouling control and vessel performance.

Eligible for carbon credits through the award-winning Gold Standard Intersleek Carbon Credit methodology.

### Key Features

Based on patented bio-renewable technology enhancing the environmental impact of fouling control products\*

Ultra-smooth surface providing reduced drag and lower fuel consumption\* rewarded through the issuance of carbon credits

Can be applied over existing antifouling systems without the need for full blast, reducing time and costs for conversion to the Intersleek system

Biocide-free and high volume solids (72%) offers enhanced environmental profile\*

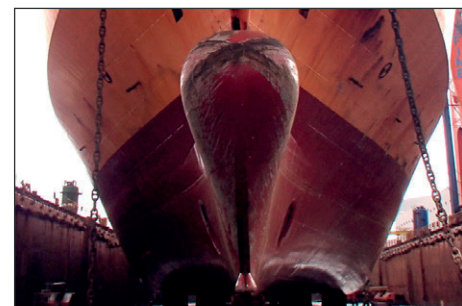
\* In comparison to our traditional biocidal antifouling products

### Product Information

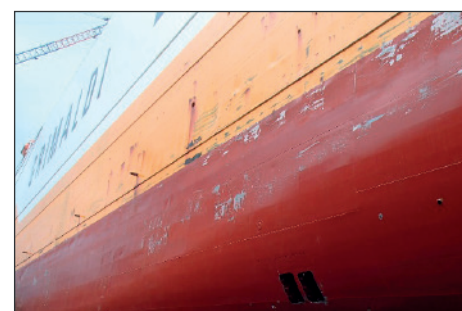
<b>Colour</b>	BXA100 - White, BXA101 - Grey, BXA102 - Blue, BXA107 - Red, BXA109 - Black
<b>Surface preparation</b>	Must be applied over approved primer system and Intersleek tiecoat ( <b>Intersleek 737 or 731</b> ) .  Can be applied direct to most antifouling systems using Intersleek linkcoat ( <b>Intersleek 717 or 7180</b> ) , and also to all intact Intersleek finishes except Intersleek 1100SR.
<b>Volume solids</b>	72% ± 2% (ISO 3233 : 1998)
<b>Typical film thickness</b>	150 microns dry (208 microns wet)
<b>Hard dry</b>	5 hours @ 25°C
<b>Minimum application temperature</b>	10°C
<b>Method of application</b>	Airless Spray, Brush

## LANION

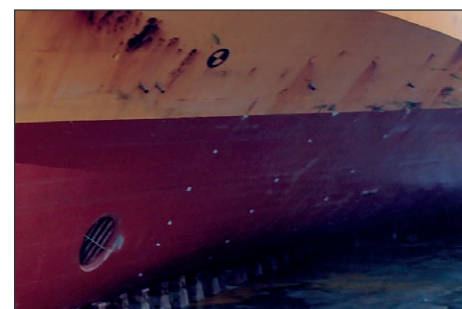
### In-Service Performance



PCC after 54 months trading in Eastern Mediterranean Sea



PCC after 54 months trading in Eastern Mediterranean Sea



PCC after 54 months trading in Eastern Mediterranean Sea

To find out more visit: [www.international-marine.com](http://www.international-marine.com)

## Biocide-free fouling control coating

## LANION Technology

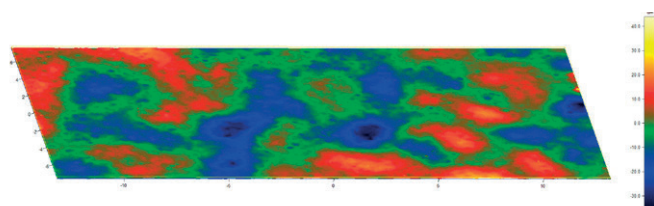
Intersleek 1000 is the first fouling control coating to use a patented technology that incorporates bio-renewable raw material. It is comprised of a number of structurally similar long chain waxy sterols, which are responsible for the foul release properties of Intersleek 1000.

This technology is also used in a number of other industries from the personal care and medical sectors where it is used to improve skin condition and healing rate to the industrial sector where it is used as a lubricant or to protect ferrous surfaces.

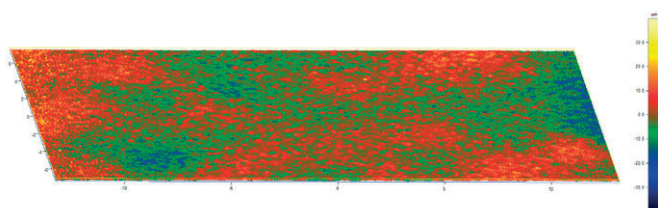
## Low Hull Roughness

Low hull roughness and smooth films are key to reducing drag, and improving vessel efficiency.

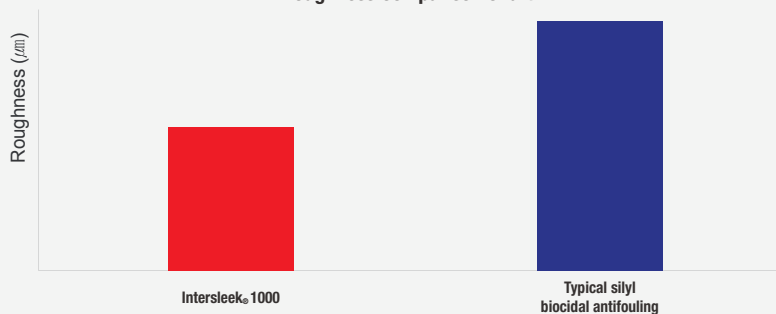
Intersleek® 1000



Typical silyl biocidal antifouling



Roughness Comparison Chart

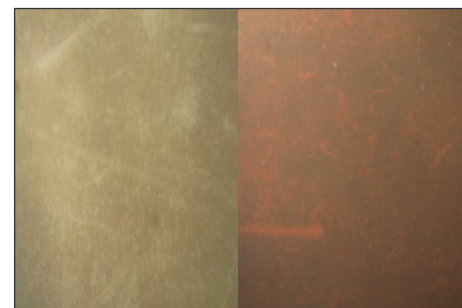


Using a technique called blue light interferometry accurately measures micro physical roughness of the coating. Intersleek® 1000 is significantly smoother than typical Silyl biocidal antifouling.

## In-Service Performance



Ro-Ro ferry operating in Australasian waters for 22 months.



Intersleek®

Biocidal SPC

Container vessel after 37 months in-service, compared with biocidal self-polishing copolymer antifouling



Intersleek®  
62 months

Biocidal SPC  
27 months

Intersleek®  
62 months

LNG after 62 months in-service compared with 27 months biocidal self-polishing copolymer antifouling, trading between Gulf waters and Japan

For each of our products the relevant Product Data Sheet, Material Safety Data Sheet and package labelling comprise an integral information system about the product in question. Copies of our Product Data Sheets and Material Safety Data Sheets are available on request or from our website.

Unless otherwise agreed in writing, all products supplied and technical advice or recommendations given are subject to the Conditions of Sale of our supplying company and the provisions of the relevant product data sheet.

To find out more visit: [www.international-marine.com](http://www.international-marine.com)