

Copper Free, Low Friction, Self Polishing Copolymer A/F

Product Description

A high solids, high performance, TBT free, copper free, low friction, Self Polishing Copolymer (SPC) antifouling with patented copper acrylate technology. Particularly suitable for fouling protection under static conditions and in service trading.

Features

Self Polishing Copolymer (SPC) antifouling paint with patented copper acrylate copolymer

Designed for use at newbuilding fitting out and in service trading under severe fouling conditions

Suitable as part of an overall scheme with all Intersmooth and Intercept deep sea products, depending on activity profile and intended service life.

Extended antifouling protection during fitting out period and proven in service performance

High volume solids (57%) & low VOC (383g/l) for faster application, reduced waste and less paint requirement

Product Information

Colour	BEA974 - Brown BEA977 - Red
Surface preparation	Interflex®8700 SPC should always be applied over a recommended coating scheme
Volume solids	57% ± 2% (ISO 3233:1998)
Typical film thickness	75 - 190 microns dry (132 - 334 microns wet)
Time to flooding	12 hours @ 25°C
Method of application	Airless Spray, Brush, Roller

Application and in service performance



Application to 212,900 DWT container vessel, New building at DSME in 2015



Application to 301,345 DWT Crude Oil Tanker, DD at Singapore, March 2014, applied to the vertical sides



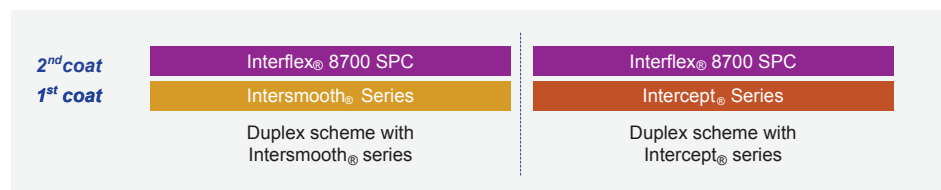
Test patch applied to a 7,120 DWT General Cargo vessel. Trading Korea-China-Japan, high risk coastal fouling challenge

To find out more visit: www.international-marine.com

Static and in service performance



Interflex® 8700 SPC Duplex Scheme

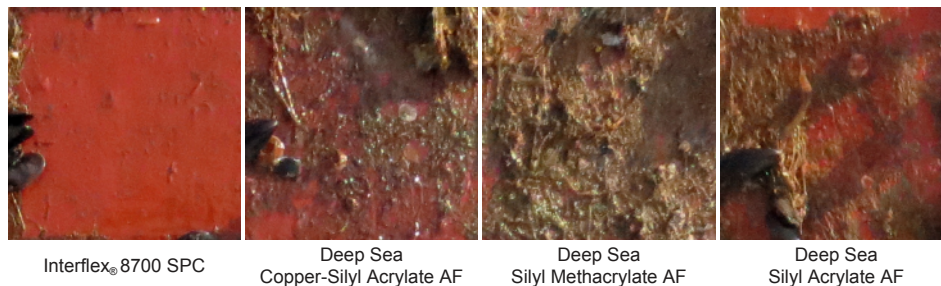


Main features of Interflex® 8700 SPC duplex scheme for newbuilding

- Reduced need for cleaning after fitting out period
- Provide in service guarantee as an overall scheme
- Excellent static performance and in service performance
- Proven track record on over 70 vessels

Excellent static performance

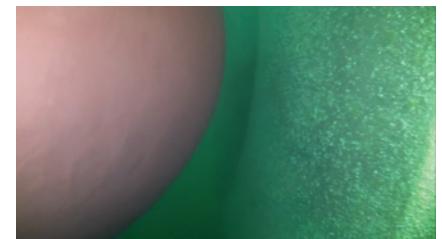
Static performance after 24 months in Geoje, Korea



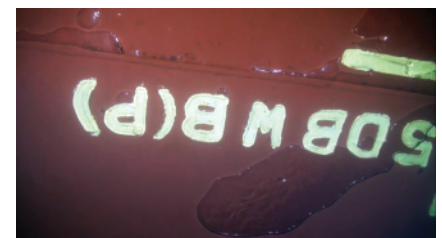
In static performance



Excellent performance on a 121,900 DWT 1st series container after 2 months fitting out at DSME shipyard, May - June



Excellent performance on a 121,900 DWT 2nd series container after 2 months fitting out at DSME shipyard, July - August



Excellent performance on a 121,900 DWT 3rd series container after 3 months fitting out at DSME shipyard, July - September

Unless otherwise agreed in writing, all products supplied and technical advice or recommendations given are subject to the Conditions of Sale of our supplying company and the provisions of the relevant product data sheet.

To find out more visit: www.international-marine.com